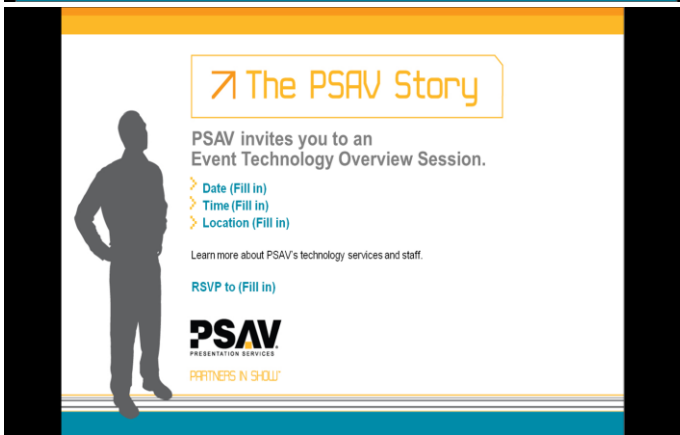


Widescreen vs. Standard



Widescreen (16x9)



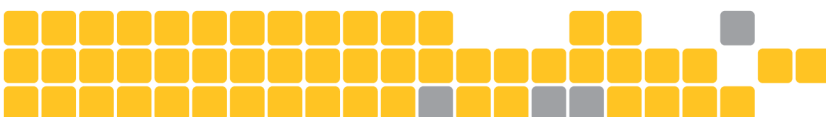
Standard (4x3)

The two Images above show the difference between a Widescreen presentation and a Standard Presentation, both of which can be created within Powerpoint.

Most video's in the last 5 years are being produced in widescreen (16x9)

It's easy to change your powerpoint into widescreen format.

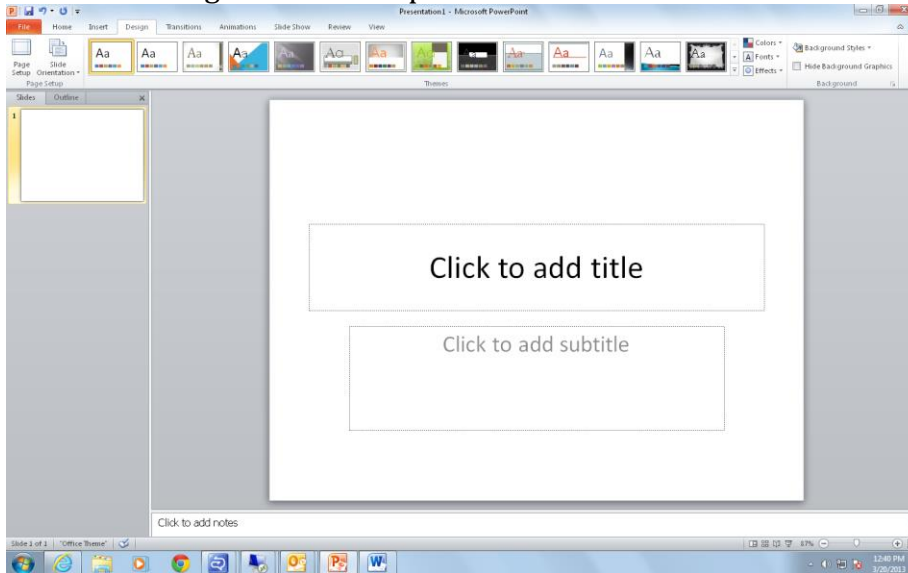
You can fit more information with a larger font in widescreen format.



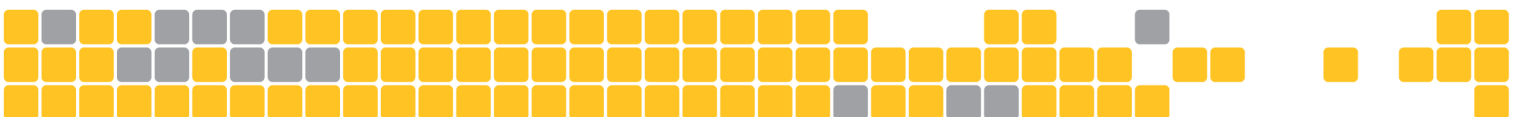
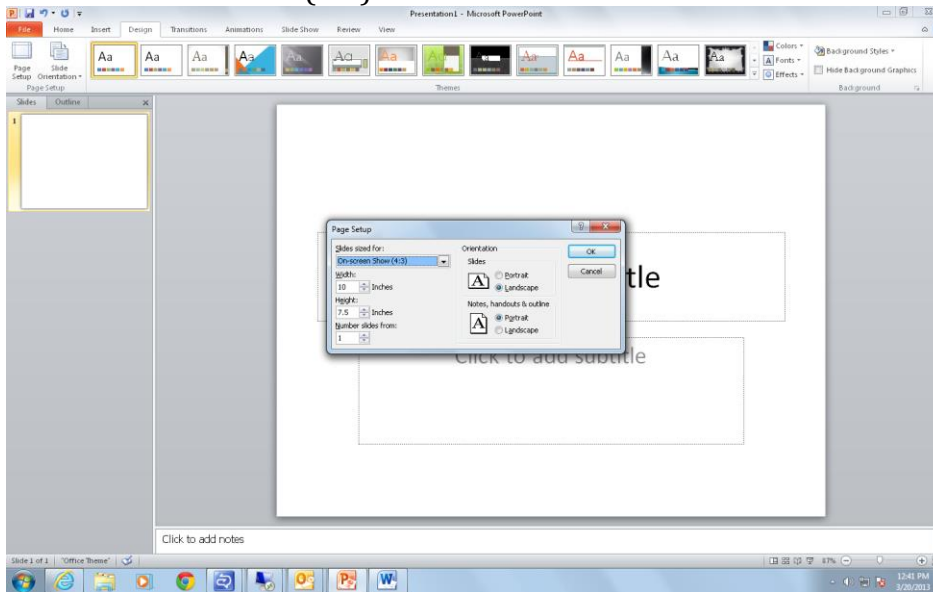
How to set Powerpoint to Widescreen

When you open a NEW Powerpoint your screen is automatically set to 4:3

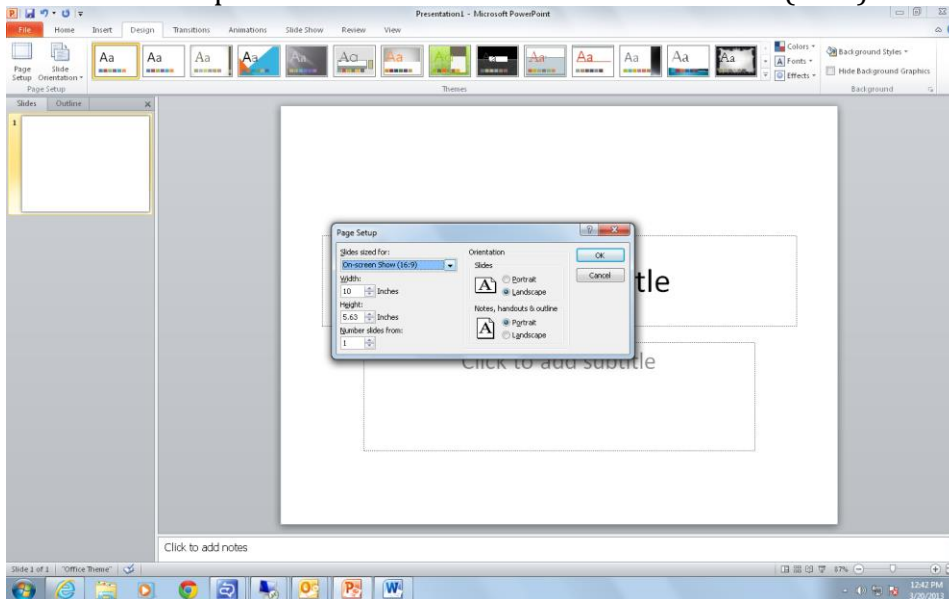
Select the Design tab at the top of the screen



Next Select the Page Setup Icon on the top left side and a box will appear, and it will read On-screen Show (4:3)



Go into the Dropdown menu and Select On-screen Show (16:9) and click ok.



You will then see the surface area grow wider and you are now ready to create your presentation.

